



For Sale

32 Sycamore Drive, Desborough

**Offers In Excess Of
£325,000**

	4
	2
	1

This is a very well presented four bedroom family home in a popular area. Comes with driveway parking and a single garage.

This is a great size four bedroom detached family home. It is close to all of the usual amenities and close to some good schools.

Upon entering this property you step into a spacious hallway, the guest cloakroom leads off from this space.

In the kitchen you will find plenty of low level kitchen cabinets and most of the kitchen appliances are integral. There is a great size utility room which provides extra storage. The dining room flows nicely into a spacious sitting room. There are double doors leading out onto the garden.

On the first floor there is a bright landing area where you can access the loft space. The master bedroom has plenty of built in storage and an ensuite bathroom. There are a further two double bedrooms and a good size single. There is a well appointed family bathroom on this level too. Outside the property there is driveway parking and a single garage. To the rear of the property you will find a great size garden with a large lawn and a patio section, great for outside entertaining.

Miranda Menzies

07979042925

miranda@thepropertyexperts.co.uk

Please contact MIRANDA your local agent.

Property and Services information.

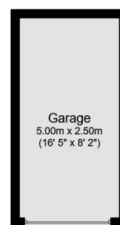
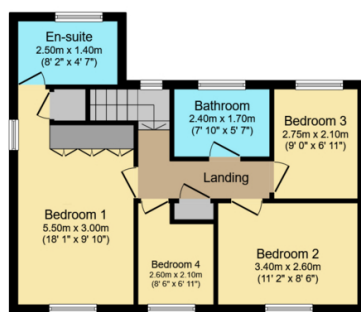
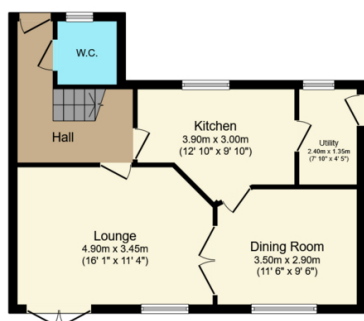
Mobile Coverage: 4G coverage is available in the area please check with the provider.

Broadband Availability: Ultrafast broadband (FTTC) is available in this area.



The Property Experts UK

01536609970



Total floor area: 112.8 sq.m. (1,214 sq.ft.)

This floor plan is for illustrative purposes only. It is not drawn to scale. Any measurements, floor areas (including any total floor area), openings and orientations are approximate. No details are guaranteed, they cannot be relied upon for any purpose and do not form any part of any agreement. No liability is taken for any error, omission or misstatement. A party must rely upon its own inspection(s). Powered by www.Propertybox.io

- A beautifully presented four bedroom detached family home.
- Close to some good schools.
- EPC rating C.
- Located in a popular area.
- En suite bathroom to the master bedroom.
- Two reception rooms.
- Utility room.
- Guest cloakroom.
- Great size rear garden.
- Driveway parking and a garage.

