



For Sale

74 Pioneer Avenue, Desborough

Guide Price £400,000

	4
	2
	1

Situated on one of the most desirable streets in Desborough is this stunning four bedroom home. Comes complete with impressive countryside views.

This property is in a great location, close to all of the usual amenities and some good schools. Upon entering the property you step into a great size hallway. There are two great size reception rooms. One of which has a log burner and the other has a bay window to the front. There are double doors so you can section off these two spaces if you need to separate the two spaces. This space flows nicely into the kitchen/family room. There are plenty of low level and wall mounted kitchen cabinets and some of the kitchen appliances are integral. You will find large doors leading out onto the raised patio area which has the most amazing views. There is a separate utility/boot room. On the first floor there is a good size landing area. You will find four double bedrooms, the master bedroom comes complete with its own ensuite bathroom. Bedroom four has a Juliet balcony where you can take in the splendid views. There is a well appointed family bathroom on this level too. Outside the property there is a walled front garden and a garage. To the rear there is an 120ft South facing garden. There are a number of brick built out buildings.

Please contact MIRANDA your local agent for more information.

Property and Services information.

Mobile Coverage: 4G coverage is available in the area—please check with the provider.

Broadband Availability: Ultrafast broadband (FTTC) is available in this area.

<https://www.ofcom.org.uk/phones-telecoms-and-internet/advice-for-consumers/advice/ofcom-checker>

Miranda Menzies

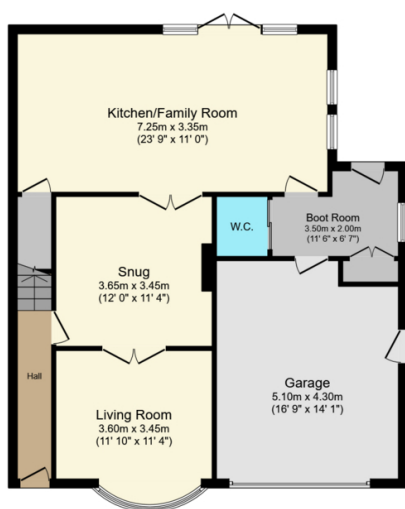
07979042925

miranda@thepropertyexperts.co.uk



The Property Experts UK

01536609970



Ground Floor
Floor area 88.4 sq.m. (951 sq.ft.)



First Floor
Floor area 68.4 sq.m. (736 sq.ft.)

Total floor area: 156.8 sq.m. (1,688 sq.ft.)

This floor plan is for illustrative purposes only. It is not drawn to scale. Any measurements, floor areas (including any total floor area), openings and orientations are approximate. No details are guaranteed, they cannot be relied upon for any purpose and do not form any part of any agreement. No liability is taken for any error, omission or misstatement. A party must rely upon its own inspection(s). Powered by www.Propertybox.io

- An extended four bedroom semi detached family home.
- Beautifully presented.
- On a very popular street.
- Large open plan kitchen/family room.
- Stunning countryside views.
- 13ft South facing rear garden.
- Four double bedrooms.
- Ensuite bathroom to the master bedroom.
- Good local schools.
- Close to the amenities.

