



**For Sale**

**15 Oldenburg Road, Corby**

**Offers In Excess Of  
£375,000**

 **4**

 **2**

 **3**

**This property can be located in a desirable area close to good schools and all of the usual amenities. It is a stunning four bedroom detached family home on an enviable plot.**

Detached 4-Bedroom Family Home in Danesholme — Spacious, Upgraded & Garden-Wrapped Plot

Nestled in the highly sought-after Danesholme development, this delightful 4-bedroom detached residence is a stand-out family home. Finished to a high standard and beautifully maintained, it offers a superb location, excellent school catchments, generous space and real potential.

---

**### Key Features:**

- **Bedrooms & Living Space** – Four good-sized bedrooms, including a master with ensuite and built-in storage. Three separate reception rooms give flexibility; one has been converted from the garage and would make a perfect home office, playroom, or even a fifth bedroom.
- **Modernised throughout** – Major internal works already done: rewired and replumbed, ensuring peace of mind.
- **Kitchen & Utility** – Open, functional kitchen with plenty of cabinetry and built-in appliances flows into a large utility room, plus a guest cloakroom. Ideal for daily family life.
- **Outdoor & Parking** – Driveway space for multiple vehicles. The home is set on an enviable plot with a wrap-around, garden that delivers privacy, outdoor living and scope for extending.
- **Outstanding Location** – Situated within the catchment area of top schools (Brooke Weston, Kingswood, Danesholme Primary). Local amenities, shops, parks, post office, play areas and

**Miranda Menzies**

07979042925

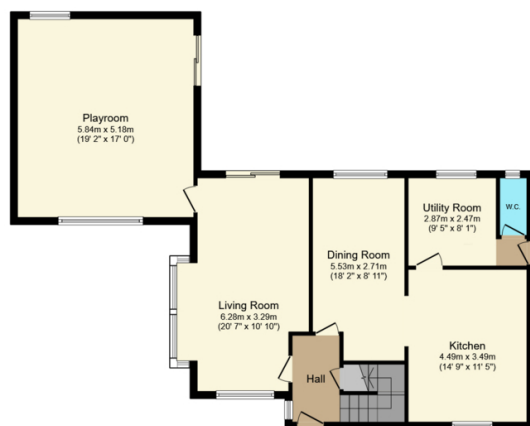
miranda@thepropertyexperts.co.uk



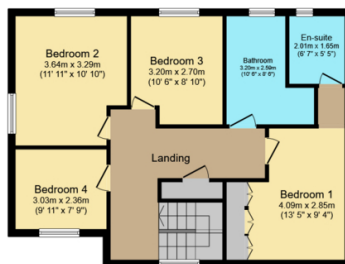
**The Property Experts UK**

01536609970





**Ground Floor**  
Floor area 99.2 sq.m. (1,067 sq.ft.)



**First Floor**  
Floor area 67.1 sq.m. (722 sq.ft.)

**Total floor area: 166.2 sq.m. (1,789 sq.ft.)**

This floor plan is for illustrative purposes only. It is not drawn to scale. Any measurements, floor areas (including any total floor area), openings and orientations are approximate. No details are guaranteed, they cannot be relied upon for any purpose and do not form any part of any agreement. No liability is taken for any error, omission or misstatement. A party must rely upon its own inspection(s). Powered by [www.propertybox.io](http://www.propertybox.io)

- Located in a popular area.
- A great size four bedroom detached family residence.
- Situated on an enviable plot.
- Possibility to extend (with the relevant planning permission).
- Good local schools.
- Close to the amenities.
- Driveway parking.
- Ensuite bathroom to the master bedroom.
- Three reception rooms.

