



For Sale

Appletree Cottage Queen Street, Geddington

Fixed Price £515,000



Appletree Cottage is an impressive three bedroom characterful property located in the highly desirable village of Geddington. Situated on an enviable plot with driveway parking and a double garage.

Situated in the old part of the village is this beautiful family home. The property is steeped with charm and character yet very comfortable and extremely spacious. With a number of ground level reception rooms and a ground level bathroom this would also suit families looking for blended living accommodation. It is located on a great size plot with very impressive country side views, driveway parking for a number of vehicles and a detached garage. Upon entering this property you step into a great size hallway. The living room/sitting room has a large window to the front and a log burner in the centre of this space. The kitchen/family room really is the heart of the home. There are plenty of low level and wall mounted kitchen cabinets and some of the kitchen appliances are integral. There is a large pantry in this space. A wonderful feature of this room is an original bread oven. There are a further two great size reception rooms. Currently being used as a home office/sitting room and a home bar/entertainment area. You will find a bathroom leading off from these rooms with an impressive roll top bath. To the rear of the property there is a large conservatory with delightful views over the well manicured garden. On the first floor there is a good size landing. There are three double bedrooms and a well appointed family bathroom. Outside the property there is driveway parking for a number of vehicles and a detached garage within a walled front garden. To the rear of the property is a large private garden with stunning views. The garden comes complete with an original air raid shelter. Please contact MIRANDA your local agent for more information.

Miranda Menzies

07979042925

miranda@thepropertyexperts.co.uk



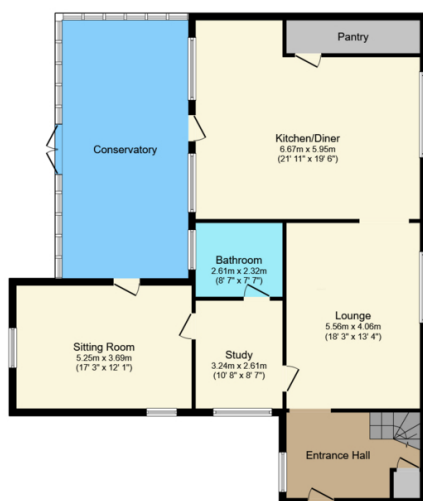
Property and Services information.

Mobile Coverage: 4G coverage is available in the area - please check with the provider.



The Property Experts UK

01536609970



Total floor area: 198.4 sq.m. (2,135 sq.ft.)

This floor plan is for illustrative purposes only. It is not drawn to scale. Any measurements, floor areas (including any total floor area), openings and orientations are approximate. No details are guaranteed, they cannot be relied upon for any purpose and do not form any part of any agreement. No liability is taken for any error, omission or misstatement. A party must rely upon its own inspection(s). Powered by www.Propertybox.io

- Located in the desirable village of Geddington.
- Situated on an enviable plot.
- Driveway parking for four vehicles.
- Detached double garage.
- Large open plan kitchen/family room.
- Four reception rooms.
- Delightful rear garden.
- Great village primary school.
- Full of charm and character.
- Impressive country side views.

