



# Barn Owl Way

STOKE GIFFORD, BS34

**James Crumpton**  
The **Bristol** Property Expert





















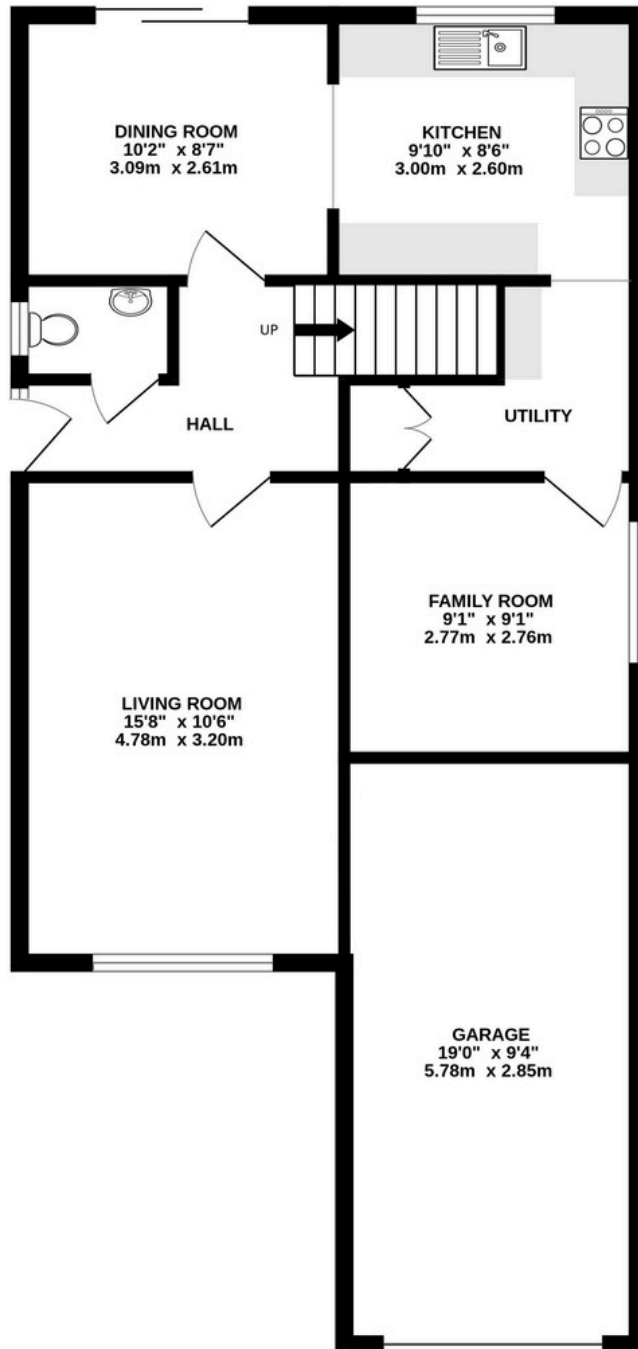
**Spacious four bedroom detached family home nestled within a cul-de-sac setting. Featuring a kitchen diner, living and family room, cloakroom and family bathroom as well as a garage and driveway parking. This fantastic home also boasts a South facing garden perfect for enjoying those summer days and family BBQ's**

---

Detached Home  
Cul-de-sac Location  
Four Generous Bedrooms  
Sociable Kitchen Diner  
Living Room  
Family Room  
Utility  
Cloakroom  
South Facing Garden  
Garage and Driveway Parking  
Close to Schools  
Nearby Shops and Amenities  
Superb Transport Links



GROUND FLOOR  
728 sq.ft. (67.7 sq.m.) approx.



1ST FLOOR  
487 sq.ft. (45.2 sq.m.) approx.

