



For Sale

114 Murcott Road East, Leamington Spa

Offers Over £250,000

 **2**

 **1**

 **4**

 **302 m2**

 **82 m2**

Nathaniel Cleaver

07793 363210

nathaniel@thepropertyexperts.co.uk

... OPEN HOUSE ON SATURDAY 30TH AUGUST FROM 3PM - BOOKING ESSENTIAL ...

This traditional semi detached bungalow is situated in a popular location and is close to schools, parks, local amenities, Doctors surgery, Public House and is a few mins drive from Leamington Spa Town Centre. It is also conveniently located for the M40 motorway network, train station and all major transport links.

In brief the property comprises of; entrance hallway, lounge / dining area, kitchen with side access, two double bedrooms and a family bathroom.

The property benefits from a great sized and lawned rear garden, side garden and well established front garden. It is gas centrally heated and double glazed throughout and requires modernisation throughout, this does give any potential buyer the chance to put their stamp on it and really make it their own.

CALL NOW TO VIEW!

Council Tax Band - C

Tenure - Freehold

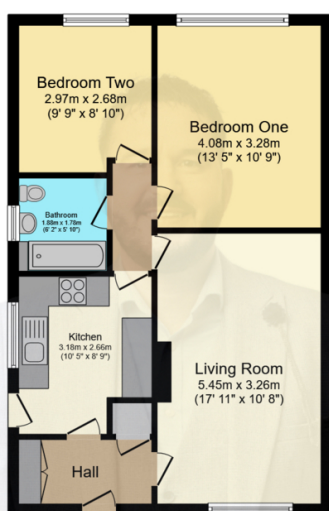
Property & Services information



 **The Property Experts**

**The Property Experts -
Leamington Spa**

01926436105



Ground Floor

Floor area 58.6 sq.m. (630 sq.ft.)

Total floor area: 58.6 sq.m. (630 sq.ft.)

This floor plan is for illustrative purposes only. It is not drawn to scale. Any measurements, floor areas (including any total floor area), openings and orientations are approximate. No details are guaranteed, they cannot be relied upon for any purpose and do not form any part of any agreement. No liability is taken for any error, omission or misstatement. A party must rely upon its own inspection(s). Powered by www.Propertybox.io

- Semi Detached Bungalow
- Two Double Bedrooms
- Lounge / Dining Area
- Kitchen
- Fantastic Sized Rear Garden
- Well Established Front Garden
- Close To All Local Amenities, Shops, Bus Stop, Doctors & Public House
- Requires Modernisation Throughout
- No Onward Chain
- EPC Rating - C

