



For Sale

25 Green Lane, Northampton

Guide Price £675,000

	5
	1
	1

Discover this exceptional five-bedroom dormer bungalow in the sought-after village of Wootton. Featuring a farmhouse-style kitchen, en-suite, and large wrap-around garden, this home offers both comfort and style.

This detached bungalow on Green Lane offers a charming five-bedroom layout, ideal for those seeking a spacious family home. The farmhouse-style kitchen and breakfast room provide a welcoming space for daily meals and gatherings. With both an en-suite and family bathroom, convenience is at the forefront of this property's design.

The exterior features a large wrap-around garden, perfect for outdoor activities or simply enjoying some fresh air. The detached double garage and additional parking space for multiple vehicles ensure ample room for storage and guests. This property's location in the sought-after village of Wootton adds to its appeal, offering a sense of community and tranquillity.

Joel Beardsmore

07989715168

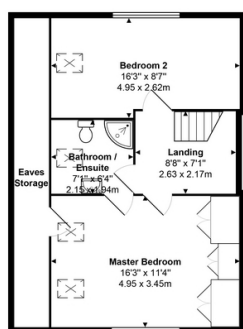
joel@thepropertyexperts.co.uk

Wootton is known for its vibrant local amenities, including schools, parks, and cultural attractions. The village setting provides a peaceful retreat while remaining accessible to nearby towns and cities. Act now to secure this desirable property; opportunities like this are rare.

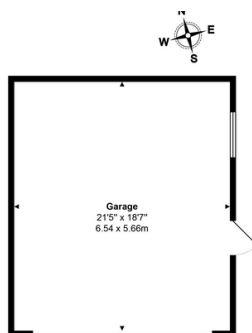


The Property Experts UK

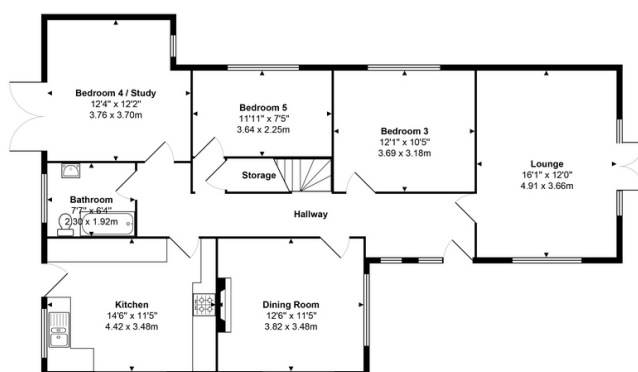
01604422551



First Floor
Area: 430 ft² ... 39.9 m²



Outbuilding



Ground Floor
Area: 1102 ft² ... 102.4 m²

Total Area: 1532 ft² ... 142.3 m² (excluding garage, eaves storage)
All measurements are approximate and for display purposes only

- Five bedroom dormer bungalow
- En-suite and family bathroom
- Farmhouse style Kitchen/breakfast room
- Large wrap around garden
- Detached double garage
- Parking for multiple vehicles
- Sought after village location

