



Telford Street, Inverness, IV3 5LE

Offers Over £120,000

Hamish

www.hamish-homes.co.uk | 01463 250000



Hamish
PROPERTY PROFESSIONALS



- Contemporary Wood-Style Flooring Throughout
- Built-In Hall Cupboard For Household Storage
- Bathroom With Bath And Separate Shower
- Electric Heating With Night Storage Units
- Ideal First-Time Buyer Or Investment Opportunity
- Modern Kitchen With Integrated Appliances
- 2 Double Bedrooms
- Double Glazing Providing Warmth & Efficiency
- Close To Caledonian Canal And Walks
- Excellent Transport Links Into City Centre

When you list with Hamish there are no upfront fees.

We can even pay for your Home Report!

Offers: Offers should be submitted to Hamish, Kintail House, Beechwood Park Inverness IV2 3BW and emailed to askhamish@hamish-homes.co.uk



Set over two levels within a detached block of flats, this two bedroom maisonette offers bright living spaces, practical storage and a prime location within easy reach of Inverness city centre.

A shared entrance and stairwell lead to the second floor landing, where the flat's independent door opens into a welcoming hallway.

The sitting room feels bright and welcoming, with cream painted walls and wood style laminate flooring creating a fresh, modern look. A window beside the switchback staircase brings in natural light, while an alcove with fitted shelving and a small cupboard below provides useful space for storage or display.

Off the sitting room to one side is the kitchen. This is a long, streamlined space with cabinets along one wall. Integrated appliances include an oven, electric hob and extractor fan, with space and plumbing for a washing machine and a tall fridge freezer. White and grey marble-effect tiling around the worktop area adds a stylish touch, while a stainless steel sink sits neatly within the run of units. A window on the side wall brings in natural light.

Off the sitting room to the left is a small inner hall with a tall built-in cupboard that provides excellent storage for household items such as vacuum cleaners and other essentials. This leads to the first bedroom. This is decorated in neutral tones and featuring a large square window with a deep sill, allowing plenty of natural light to flood the room. A side wall heater ensures warmth and the same quality flooring runs throughout the hall and bedroom.

Upstairs, the landing leads to a second double bedroom with dormer window, sloping ceilings, neutral décor and the same wood-effect laminate flooring as the lower level. Ceiling spotlights brighten the space, making it feel open and inviting.

The attic floor bathroom is a generous size and features both a bath and a separate square shower enclosure with chrome edging and a Mira Sport electric shower. A white toilet and wash hand basin complete the suite, with ceiling spotlights adding to the fresh, modern finish.

The property benefits from uPVC double glazing and electric heating. Its location, next to the Caledonian Canal and Telford Retail Park provides a range of local amenities. Inverness city centre is also within easy reach, making this a practical choice for first-time buyers, investors or anyone looking for a property in a great location. Interest is likely to be high, so please contact Hamish Homes today to make sure you don't miss out!

About Inverness

Inverness, the capital of the Scottish Highlands, offers an enchanting blend of history, culture and natural beauty, making it a prime destination for home buyers.

The city's charm combines old-world allure with modern amenities. Inverness Castle, overlooking the river, provides a glimpse into the city's past, while the bustling city centre features contemporary shops, restaurants and cafes. Inverness boasts a range of excellent schools, healthcare services and a low crime rate, ensuring a high quality of life.

Outdoor enthusiasts will find Inverness a paradise, with easy access to the Highlands' vast wilderness for hiking, cycling and wildlife spotting. The city is also the gateway to the North Coast 500, Scotland's ultimate road trip, offering breathtaking coastal scenery.

Culturally, Inverness thrives with numerous art, music and sporting festivals and events. The Eden Court Theatre and Cinema is a hub for performing arts, while local museums and galleries celebrate the region's heritage.



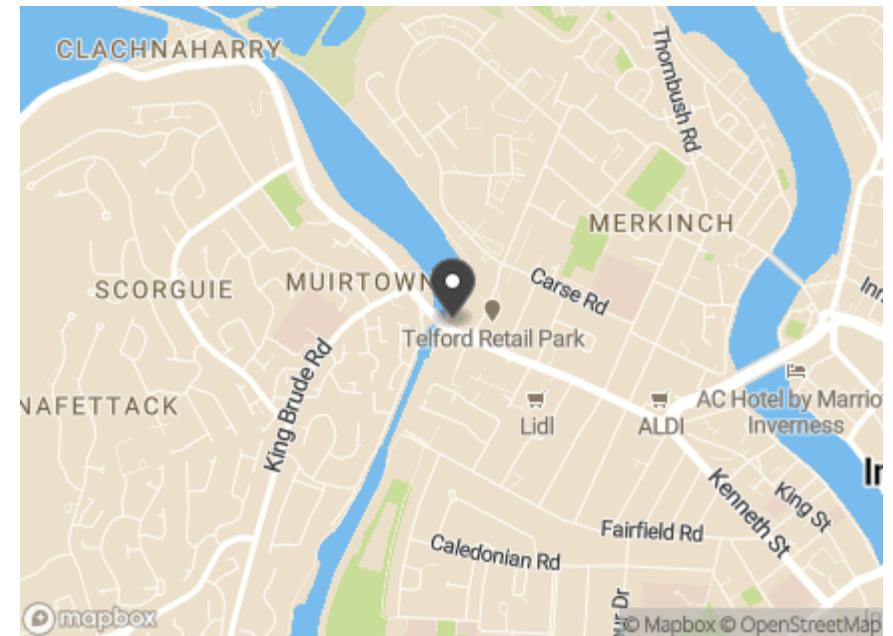
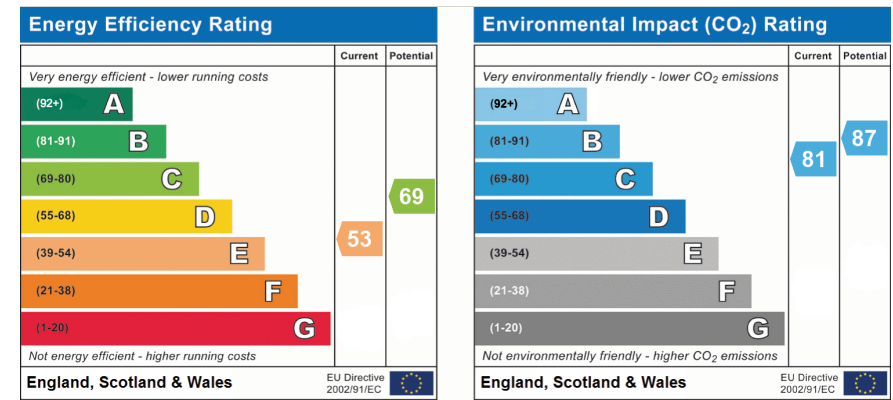
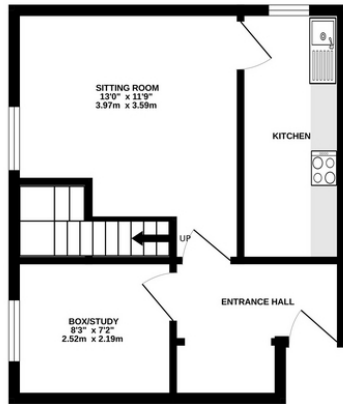


 2

 1

 66 m²





Hamish

Kintail House, Beechwood Park,
Inverness, IV2 3BW

www.hamish-homes.co.uk | 01463 250000