



Woodlands Court, Inverness, IV2 5AP

Offers Over £110,000

Hamish

www.hamish-homes.co.uk | 01463 250000



Hamish
PROPERTY PROFESSIONALS



- Private First Floor Entrance With External Stairs
- Modern Kitchen With Breakfast Bar Area
- Additional Storage With Useful Pantry/Utility
- Stylish Bathroom With Shower Over Bath
- Large Double Bedroom
- PVC Double Glazed Windows & Entrance Door
- Partial Heating With Night Storage Heaters
- Ideal First Home Or Buy-To-Let Opportunity
- Low Maintenance Property Ready To Move Into
- Great Location Within Quiet Woodlands Setting

When you list with Hamish there are no upfront fees.

We can even pay for your Home Report!

Offers: Offers should be submitted to Hamish, Kintail House, Beechwood Park Inverness IV2 3BW and emailed to askhamish@hamish-homes.co.uk



This first floor flat in Inshes Wood offers a great combination of comfort, convenience and privacy. With its own independent entrance and bright interiors, it's an ideal choice for first time buyers, downsizers or anyone looking for a manageable home close to Inverness city centre.

An external stairwell leads to the property's private entrance door, where you step into a welcoming hallway with useful storage on hand. From here, the home flows naturally through the accommodation.

The sitting room offers plenty of space to accommodate sofas, a dining table and even a workstation, giving it real flexibility for day to day living. Cream painted walls and a soft grey carpet keep the décor simple and easy to work with, so a new owner can put their own stamp on it. A wide front window draws in the light, making the room feel bright and welcoming.

Leading off the sitting room, the kitchen has been designed with dark wood style cabinets topped with black acrylic worktops. A stainless steel sink sits beneath the window, while tiled splashbacks around the cooking areas add practicality. There is space for a freestanding cooker and under counter space for laundry appliances. A breakfast bar to one side creates a handy spot for quick meals or a morning coffee. Off to the side there's a handy little utility space with shelving that works well as a pantry and adds some valuable extra storage.

The flat's double bedroom is a spacious and relaxing retreat. A large square window brings in plenty of daylight, while neutral walls and light grey carpet give the room a calm and contemporary feel. There is enough floor area for a double bed and additional furniture, making it both practical and comfortable.

The bathroom is finished with a smart combination of cream painted walls and black speckled wetwall panels around the bath and wet areas. It includes a white three piece suite of toilet, pedestal basin and bath, with a Triton electric shower fitted above. A window provides natural ventilation and light, while a wall mounted mirror adds to the sense of space.

Windows and the entrance door are PVC double glazed replacements. Heating is provided by night storage heaters in the hall and sitting room, together with a convector heater in the bathroom, while hot water is supplied by a pre-insulated cylinder fitted with an electrical immersion heater.

Situated in the Woodlands Court cul-de-sac, the property enjoys a peaceful setting with woodland nearby while being just minutes from all the amenities of Inverness. With its easy upkeep, bright interiors and convenient location, this flat is an appealing property ready to move straight into. Early viewing is strongly recommended to fully appreciate everything it has to offer, so contact Hamish Homes today to arrange your private appointment.

ABOUT INVERNESS

Inverness, the capital of the Scottish Highlands, offers an enchanting blend of history, culture and natural beauty, making it a prime destination for home buyers.

The city's charm combines old-world allure with modern amenities. Inverness Castle, overlooking the river, provides a glimpse into the city's past, while the bustling city centre features contemporary shops, restaurants and cafes. Inverness boasts a range of excellent schools, healthcare services and a low crime rate, ensuring a high quality of life.

Outdoor enthusiasts will find Inverness a paradise, with easy access to the Highlands' vast wilderness for hiking, cycling and wildlife spotting. The city is also the gateway to the North Coast 500, Scotland's ultimate road trip, offering breathtaking coastal scenery.

Culturally, Inverness thrives with numerous art, music and sporting festivals and events. The Eden Court Theatre and Cinema is a hub for performing arts, while local museums and galleries celebrate the region's heritage.



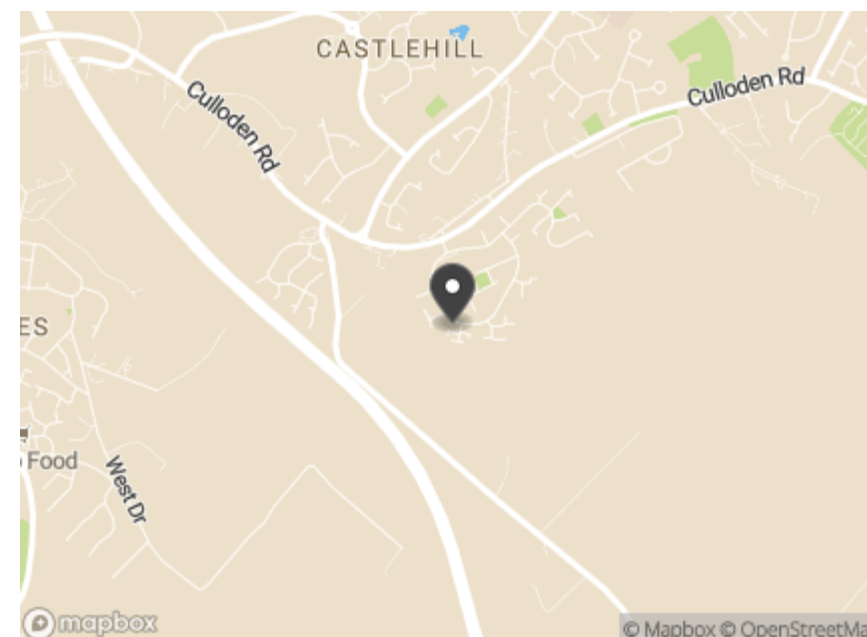
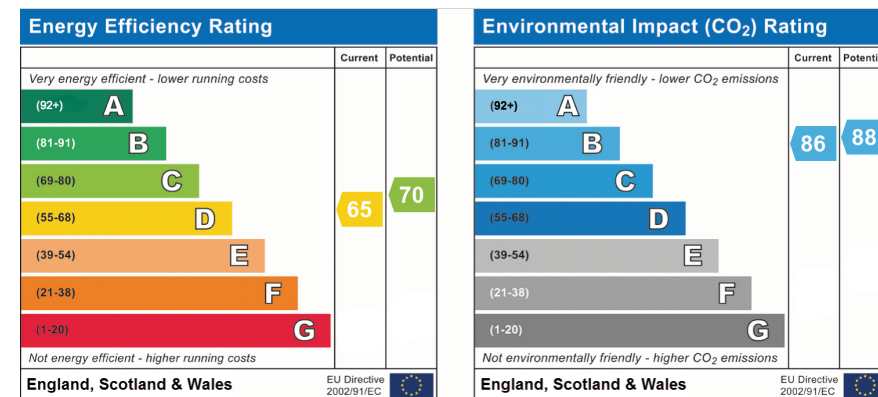
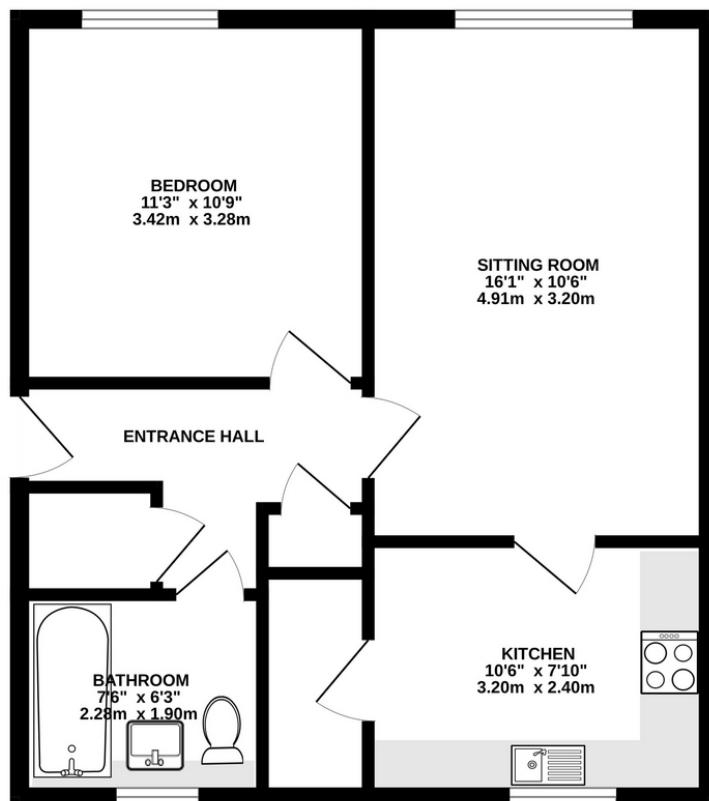


 1

 1

 49 m2





Hamish

Kintail House, Beechwood Park,
Inverness, IV2 3BW

www.hamish-homes.co.uk | 01463 250000