



WATERHOUSE
ESTATE AGENTS
Local, Professional Property Services

Mulberry Cottage - Holme





Features

- A beautiful stone-built barn conversion
- Three bedrooms with elevated views
- Spacious living accommodation throughout
- Full of character and charm
- Two parking spaces
- Beautiful countryside views out to distant fells
- Well maintained and presented throughout
- Low maintenance, wrap around garden

Combining modern comfort with rural charm, this beautiful three bedroom, end of terrace property offers everything you need for a relaxed and peaceful lifestyle, nestled in a tranquil countryside setting. With generous accommodation, original features, and a thoughtfully designed outdoor space, this home is perfect for families, couples, or anyone seeking a cosy retreat away from the hustle and bustle. There are impressive open countryside views and an ever-changing landscape surrounding the home. The interior is filled with charm, featuring characterful touches like exposed beams, tall ceilings, hand-made arched windows and inviting fireplaces. The living areas are spacious yet cosy, making the property perfect for family gatherings and quiet nights in with a fantastic, sociable kitchen, boasting oak units and granite work surfaces, that can be opened up to the versatile dining

room and a practical utility room. The three first floor bedrooms ensure plenty of space for growing families or for those needing a guest room or home office with each room enjoying natural light and offering flexibility in terms of layout and design. The living and dining areas are open and airy, while still retaining a homely, intimate feel. Designed with convenience in mind, the low maintenance gardens are perfect for enjoying the outdoors without the work. Whether you want to entertain guests with a summer BBQ or simply to relax in with a good book in the sunshine, this easy-care outdoor space offers just the right amount of greenery and privacy. This property comes with two private parking spaces making coming and going hassle-free, ideal for households with multiple vehicles or visitors. Despite its countryside setting, you're never too far from essentials. A

short drive will take you to Milnthorpe and Holme with local shops, cafes, and pubs, as well as excellent schools and other amenities. It's the perfect balance of rural tranquillity and convenient access to nearby towns. The popular village of Holme is conveniently located with easy access to both junctions 35 and 36 of the M6 motorway and is on the main line 555 bus route that runs through the village regularly linking with Lancaster, Kendal and the Lake District. Within the village there is a pub and the village primary school is rated GOOD by Ofsted. The local secondary school, Dallam, is located 3 miles away in the village of Milnthorpe. There are activities all year round for all ages ranging from toddler and baby groups to walking societies and the women's institute. There is also a cricket club, various community projects, Holy Trinity church and a crown green bowling club.



GROUND FLOOR

Entrance porch

A wonderfully spacious entrance into the home complete with a vaulted ceiling, dual aspect views and bursting with natural light. There is ample room here to remove and store boots, coats and bags after long countryside walks, while also being able to accommodate a home office space or relaxing seating area. The easy to clean tiled floor creates the ideal space for entering the home with muddy boots and dogs before entering the main accommodation.

Dining room

A generous, yet cosy, room with an abundance of space for a dining table to comfortably seat six and also room to relax around the log burning stove. Double glazed doors to one end reveal the kitchen and ensure natural light illuminates the space. The doors can be opened up to create a versatile open space for entertaining and dining.

Living room

A lovely, homely room to spend time with all the family to relax and unwind. Offering a generous space, there are dual aspect views to enjoy and a feature gas fireplace adding a cosy touch.

Kitchen

A superb, high quality kitchen boasting oak cabinetry with soft close doors and granite work surfaces, window sills and upstands. There are two windows overlooking the garden and also allowing natural light to flow through.



Utility room

Located at the end of the kitchen and with direct access outside, this is a great addition to the home with a tiled floor and ample room to store coats, bags and more. There is plumbing and space for a washing machine with wall unit storage and access to an attic space.

FIRST FLOOR

Bedroom 1

A double bedroom enjoying dual aspect elevated views out to surrounding countryside. There is a large built-in wardrobe and storage to utilise.

Bedroom 2

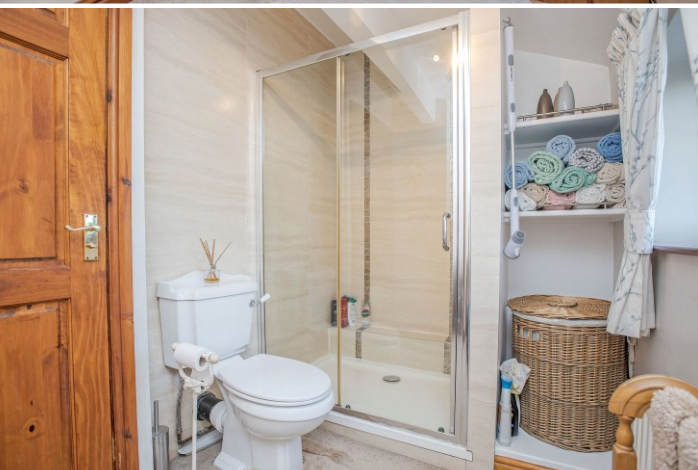
A cosy double bedroom with built-in wardrobes to one wall and a window with deep sill framing elevated views.

Bedroom 3

A good sized bright, single bedroom with a large window and a deep walk in storage cupboard.

Shower room

A good sized shower room with a wonderful view! Consisting of a large shower cubicle with a mains fed shower, WC and hand basin with tiled splashbacks. There is fitted shelving to the side of the shower, perfect for toiletries and towels.



Externally

A welcoming gravelled driveway with surrounding stone walls and raised beds packed full of colour. There is a shed for storage and a gated path leads around the property to a 'walled garden' consisting of beautiful planting throughout with mature trees and shrubs for interest with a paved area perfect for sitting out to enjoy the peaceful countryside location. The gardens are designed to be low maintenance while offering an abundance of colour and interest all year round.



Useful Information

Tenure - Freehold.

Council tax band - D (Westmorland and Furness Council).

Heating - Gas central heating.

Drainage - Septic tank.

Water - Metered.

What3Words location - [///seagulls.paramedic.crew](https://www.what3words.com/#!/en/@@@seagulls.paramedic.crew).



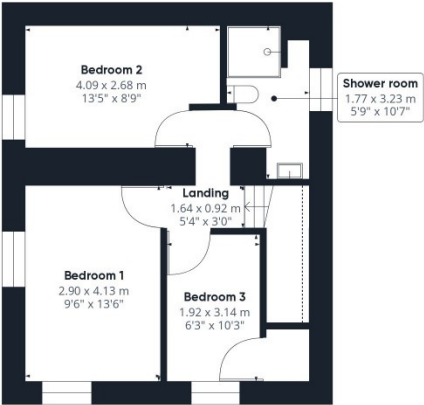
**WATERHOUSE
ESTATE AGENTS**
Local, Professional Property Services



Mulberry Cottage - Holme



Ground Floor



Floor 1



Approximate total area⁽¹⁾

98.57 m²
1061 ft²

Reduced headroom

1.16 m²
12.49 ft²

(1) Excluding balconies and terraces

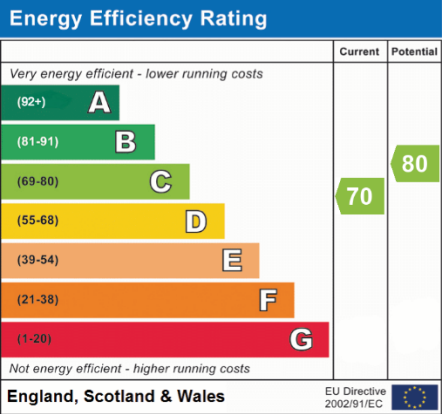
Reduced headroom

..... Below 1.5 m/5 ft

While every attempt has been made to ensure accuracy, all measurements are approximate, not to scale. This floor plan is for illustrative purposes only.

Calculations are based on RICS IPMS 3C standard.

GIRAFFE360



Waterhouse Estate Agents
10 Park Road, Milnthorpe
LA7 7AD
Tel: 01524 760048

info@waterhouseestates.co.uk
www.waterhouseestates.co.uk



WATERHOUSE
ESTATE AGENTS
Local, Professional Property Services

All rooms have been measured with electronic laser and are approximate measurements only. None of the services to the above property have been tested by ourselves, and we cannot guarantee that the installations described in the details are in perfect working order. Waterhouse Estate Agents for themselves, and for the vendors or lessors, produce these brochures in good faith, and are a guideline only. They do not constitute any part of a contract and are correct to the best of our knowledge at the time of going to press.