



Coronation Gardens, Etchingam, TN19

£325,000



3



1000 sq ft

PAUL STRIPP

ESTATE AGENT PERSONAL SERVICE
EAST SUSSEX



Fall in love with this fabulous 3-bedroom family home nestled in the sought-after Hurst Green neighborhood! This property, finished to a high standard, offers a perfect setting to create cherished memories with your loved ones.



PAUL STRIPP
ESTATE AGENT PERSONAL SERVICE
EAST SURREY

Key Features

- Beautifully finished 3-bedroom family home
- Cozy living room with a brick fireplace and laminated wood-effect flooring
- Well-appointed kitchen with white units, wooden worktops, and integrated appliances
- Dining area with patio doors leading to a south-facing garden
- Utility area with work surface and cloakroom
- Spacious landing with loft access
- Bathroom with laminate wood-effect flooring, bath with shower attachments, sink and WC, and an airing cupboard housing boiler
- Three generously sized bedrooms, one with rear aspect and built-in cupboard, the other with front aspect





PAUL STRIPP
ESTATE AGENT PERSONAL SERVICE
EAST SUSSEX



Fall in love with this fabulous 3-bedroom family home nestled in the sought-after Hurst Green neighborhood! This property, finished to a high standard, offers a perfect setting to create cherished memories with your loved ones.



As you enter, you're greeted by a cozy living room, complete with laminated wood-effect flooring and a brick fireplace, perfect for those cherished family moments. Sliding doors lead to a well-appointed kitchen, boasting a range of white units, wooden worktops, an inbuilt fridge and freezer, and a stainless-steel sink situated under a kitchen window. The adjacent dining area, featuring patio doors, overlooks the sun-drenched south-facing garden, offering an ideal space for both everyday meals and entertaining.

The property also features a practical utility area with a work surface and cloakroom, and a door leading to the garden. Upstairs, you'll find a spacious landing with loft access, a bathroom with laminate wood-effect flooring, bath with shower attachments, sink and WC, and two windows adding plenty of natural light. Additionally, the bathroom features an airing cupboard housing the boiler.

All three bedrooms are generously sized, with one offering a rear aspect and built-in cupboard, and another with a front aspect. The south-east facing garden consists of a patio area, a lower tiered grass area with a shed, and a storage area - ideal for BBQs.

With a driveway providing ample parking, this property has everything you need to move right in and make it your own! Don't miss this opportunity to call this wonderful house your forever home.

Nestled in East Sussex, Hurst Green is a charming village that presents a harmonious blend of community spirit and convenient amenities, making it an ideal place for families, professionals, and retirees alike.

The village boasts two well-regarded primary schools, a well-stocked local shop, and a popular takeaway, catering to daily needs. The heart of this vibrant community is a popular church that hosts regular events, fostering a warm, close-knit atmosphere. A well-maintained playground is a favorite among local families, adding to the village's appeal.

Though Hurst Green itself does not have a train station, Etchingham station is only a short distance away, providing reliable and convenient rail connections for commuting or leisure. Bus routes are also plentiful, making travel to nearby areas straightforward.

Situated close to the historic town of Battle, known for its rich heritage, and the bustling seaside town of Hastings, Hurst Green offers a tranquil village lifestyle without compromising on accessibility to local attractions and amenities.



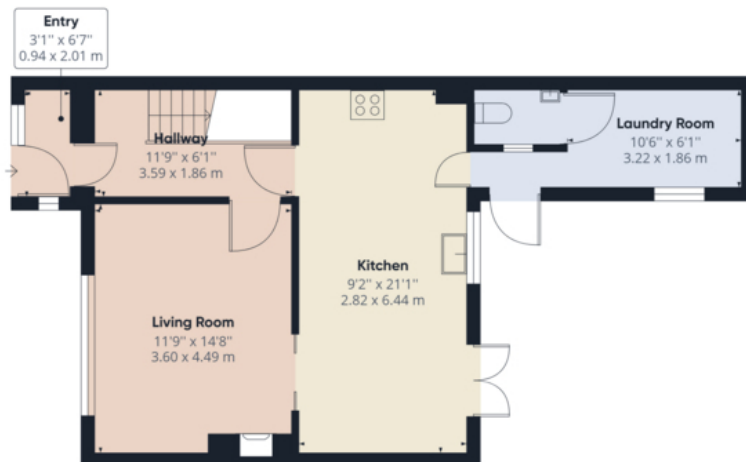


PAUL STRIPP
ESTATE AGENT

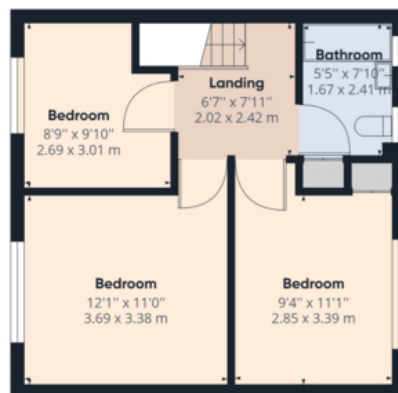


PAUL STRIPP
ESTATE AGENT





Floor 0



Floor 1



Approximate total area⁽¹⁾
1000.29 ft²
92.93 m²

(1) Excluding balconies and terraces

While every attempt has been made to ensure accuracy, all measurements are approximate, not to scale. This floor plan is for illustrative purposes only.

GIRAFFE360

Tenure Type: Freehold
Council Tax Band:
Council Authority: