



75 Sycamore Road

BUCKINGHAMSHIRE • GUIDE PRICE £492,500

A modern two-bedroom top-floor apartment in Amersham, with lift access, secure gated parking, and a communal garden, all just moments from the station with outstanding connections to London.

- Over 900 square feet
- Two double bedrooms with storage
- Secure underground parking
- Top floor with lift access
- Central location with easy links into London

DESCRIPTION

Spanning over 900 square feet on the top floor, this residence features convenient lift access and a thoughtfully designed layout that maximises space and storage.

The fully fitted kitchen showcases sleek composite worktops and integrated appliances, including an oven, dishwasher, induction hob, and fridge freezer, complemented by a separate utility cupboard housing a washer-dryer. The bright reception room is a standout feature, flooded with natural light from two large Velux windows, creating a warm and inviting atmosphere.

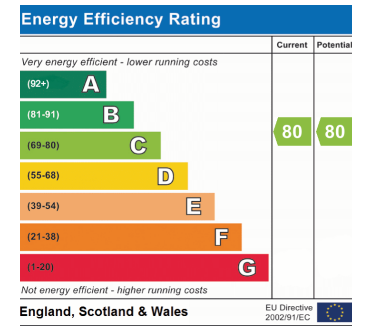
This apartment boasts two generously sized double bedrooms, each with built-in storage. The principal bedroom includes an ensuite, while the second bedroom is served by a spacious family bathroom complete with a shower over the bath.

Residents can also enjoy access to a stunning communal garden and an allocated secure parking space, conveniently located directly accessible from the lift.

Perfectly situated just moments from Amersham station, you can reach London Marylebone in as little as 22 minutes via the Chiltern Line, while the Metropolitan Line offers seamless connections deeper into the city. Amersham itself is rich in green spaces, scenic walking paths, and a vibrant selection of shops, restaurants, and cafés, making it an ideal location for modern living.







Approximate Gross Internal Area = 84.4 sq m / 908 sq ft

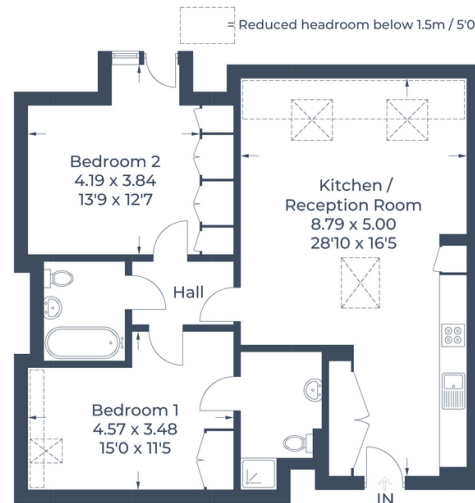


Illustration for identification purposes only, measurements are approximate, not to scale.
© CJ Property Marketing



Robbie Gittins
Partner
0203 879 0723
robbie.gittins@hardinggreen.com

Important Notice. We would like to inform prospective purchasers that these sales particulars have been prepared as a general guide only. A detailed survey has not been carried out, nor the services, appliances and fittings tested. Room sizes should not be relied upon for furnishing purposes and are approximate. If floor plans are included, they are for guidance only and illustration purposes only and may not be to scale. If there are any important matters likely to affect your decision to buy, please contact us before viewing the property.



FIND OUT MORE