



# MrGreen







# Southbourne Grove

## Bournemouth

£200,000

A delightful one-bedroom flat in the heart of Southbourne. This is the perfect location, just a short walk from your local coffee shops and award-winning beaches. This second-floor flat is a must see! Check out our 3D Virtual Tour.

### Property Description

Stepping through the door and straight ahead, you have a lovely bright open plan living & kitchen space. Refurbished only 2 years ago, this modern space is bright with full length windows along one side, perfect for those cosy days at home and has plenty of room for a dining table. The kitchen has an immaculate finish with integrated appliances, and a breakfast bar, perfect for socialising!

Walking through the rest of the flat you have a separate WC to your right, this is perfect for guest use. The double bedroom is a fantastic size that benefits from more full length windows, letting in so much light and huge wardrobes, making this flat big enough for 2 to share. Off the bedroom you have an ensuite that includes a bath over shower.

Coming out of your front door, down the stairs to the ground floor communal area, you have a great amount of bike storage. As you come out of the block you are on Southbourne Grove, amongst all it's lovely restaurants and bars. This property is chain free and would be ideal for a first time buyer or couple.

#### Agent Notes

Tenure – leasehold

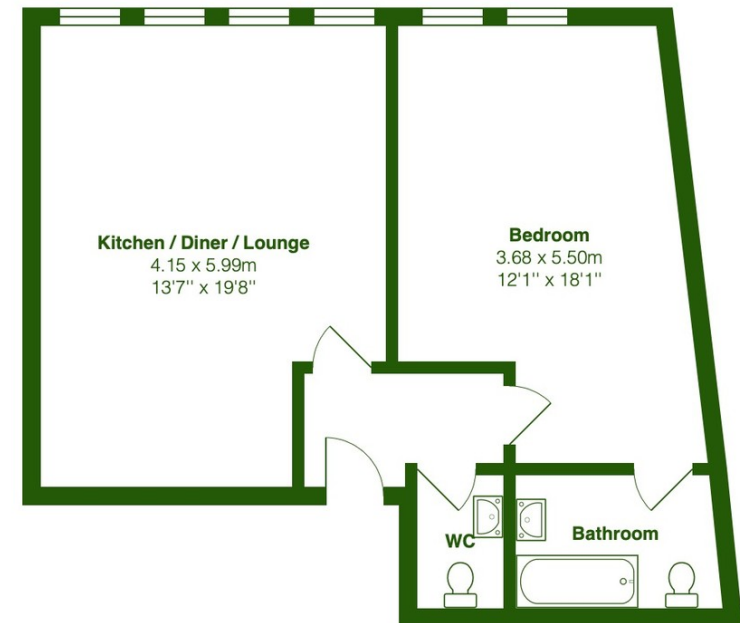
Lease Length – 121 years remaining

Service Charge - £945.50 per annum

Ground rent - £250 per annum

Holiday Lets – To be confirmed

Pets – On permission



Total Area: 56.2 m² ... 605 ft²

All measurements are approximate and for display purposes only







**MrGreen**



**MrGreen**

**01202 387718**