



The Compass, Southampton

SOUTHAMPTON, SO14 5BQ - £219,950

enfields

The Compass

City Centre, SO14 5BQ

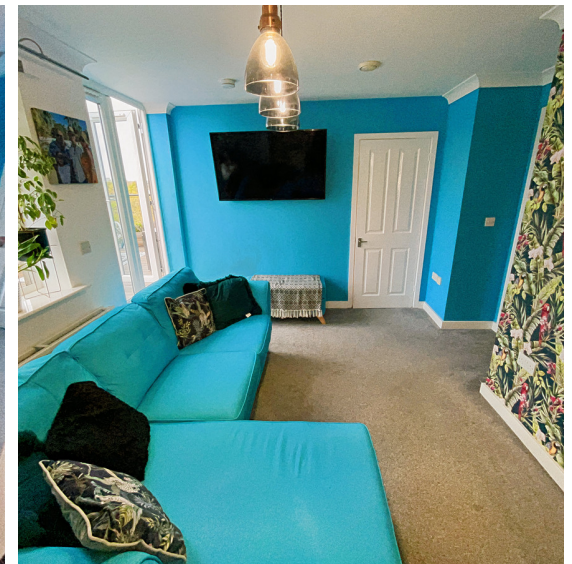
A 2/3 bedroom penthouse. Features a modern kitchen, tranquil master bedroom with private en-suite, and under croft parking. Highlights include a private roof terrace and proximity to the city centre and Ocean Village. Ultimate city luxury living.

Presenting you Columbus House, Southampton, SO14 5BQ—a luxurious penthouse apartment perfectly designed for a sophisticated city lifestyle. This dream home boasts three spacious bedrooms, one of which includes an opulent private en-suite.

The 2/3-bedroom (third bedroom has been adapted using space from the living room) penthouse is the epitome of modern style infused with comfort. The main living space comprises a well-appointed lounge area, spotlights adorned throughout, presenting the perfect place to unwind and entertain guests. An impressive modern kitchen is fully fitted with high-gloss units, integrated appliances, and provides ample space for home dining.

The master bedroom is a haven of tranquillity. The addition of an en-suite ensures complete privacy and convenience, its quality finish echoing the high standard maintained throughout this impeccable property.

The apartment boasts a stunning 3-piece bathroom suite, meticulously designed to offer comfort and elegance. Under croft allocated parking provides a safe, convenient, and protected space for your vehicle, while adding additional security for peace of mind.





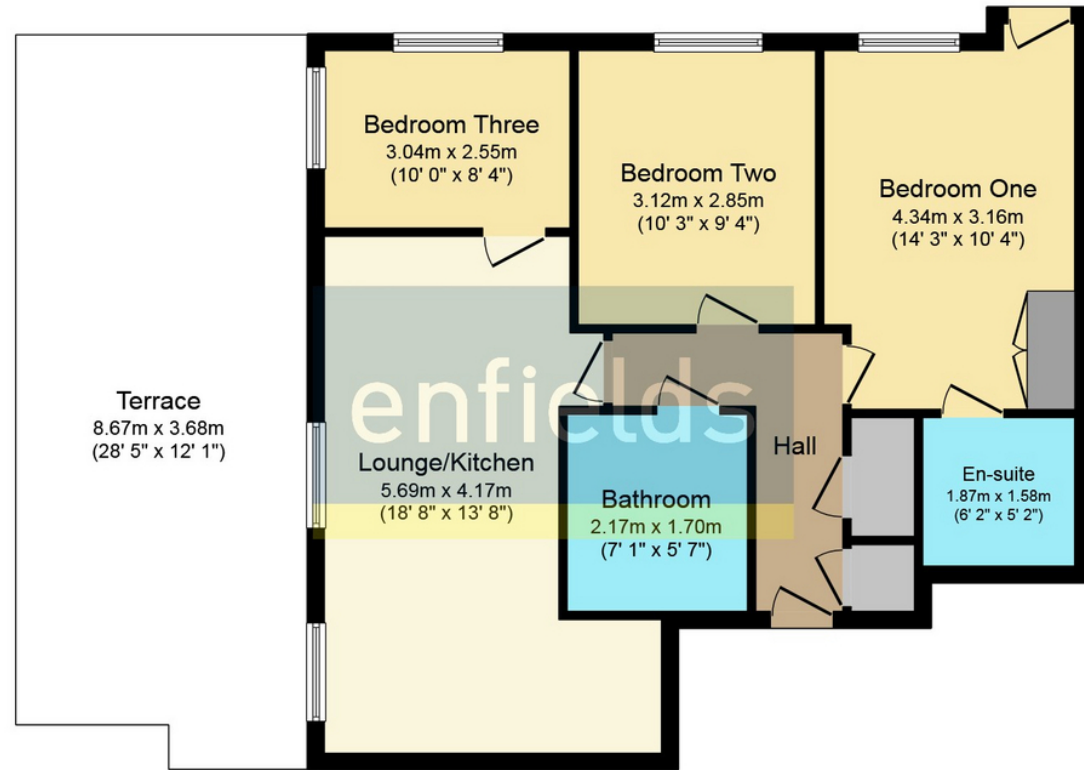
Undoubtedly one of the most desirable features is the private roof terrace. Whether you're enjoying an al fresco dinner on a warm summer's evening or taking in the breath taking city views with a morning coffee, this outdoor space adds an invaluable extension to your living area.

Location-wise, this property could not be better situated. Being in close proximity to the city centre, a plethora of dining, shopping, and entertainment options are at your doorstep. The beautiful Ocean Village is also just a short stroll away, offering waterside dining and leisure facilities.

This apartment exudes city luxury with an exceptional location, and is perfect for those looking to establish a home base with outstanding amenities and the vibrant city of Southampton on their doorstep. Imagine living in your sophisticated penthouse, enveloped by the pulsating heartbeat of the city—you've found your dream home in Columbus House.



Council Tax Authority: Southampton City Council
Tenure: Leasehold
Energy Efficiency Rating: C



Floor Plan

This plan is for illustration purposes only and may not be representative of the property. Plan not to scale.

enfields

Enfields Southampton, 3 West End Road, Southampton, SO18 6TE

Tel: 02380 425 925 Email: sales@enfields-southampton.co.uk www.enfields-southampton.co.uk

IMPORTANT NOTICE: The details presented in these property particulars are believed to be precise, but they are intended to serve only as a general guide and must not be regarded as a formal offer or contractual agreement. Prospective buyers should not depend on these details as accurate statements or depictions of reality but should instead verify their correctness via their own inspections or other established means. We have not conducted an exhaustive survey, nor have we tested the utilities, appliances, or particular fixtures. Room dimensions must not be relied upon for carpeting and furnishing decisions. The measurements provided are estimated. No employee within Enfields has the power to make or offer any representation or guarantee about the property.

