



St. Hildas Terrace, Whitby, YO21

Guide Price £260,000

hendersons.
estate agents



Set within one of Whitby's most prestigious addresses, this beautifully updated apartment on St Hilda's Terrace forms part of a striking Grade II listed building — offering timeless elegance, quality finishes and a real sense of grandeur.



Key Features

- Situated in a Stunning Grade II Listed Building
- Beautifully Modernised Two Bedroomed Apartment
- Brimming with Character
- Two Bathrooms
- Prestigious Central Location
- A Share of the Freehold
- Quality Fittings Throughout
- 999 Yr Lease From 2004









Positioned on the upper floors, the apartment has been sympathetically modernised to an exceptional standard, blending original features with considered contemporary styling. The spacious lounge is a standout, with two large sash windows flooding the room with natural light and a character fireplace providing a stylish focal point.

The gloss kitchen is both sleek and sophisticated, complete with brass-toned fittings and integrated appliances including a dishwasher. The main bathroom features a large walk-in shower with traditional yet elegant fittings, while the principal bedroom enjoys the added luxury of a private en-suite.

The communal areas are nothing short of breathtaking — a true extension of the building’s heritage, with sweeping staircases, grand archways, intricate cornicing and a magnificent domed ceiling that draws the eye upward. These beautifully maintained shared spaces make every arrival feel special and truly reflect the prestige of the building.

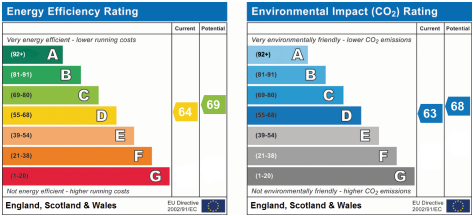
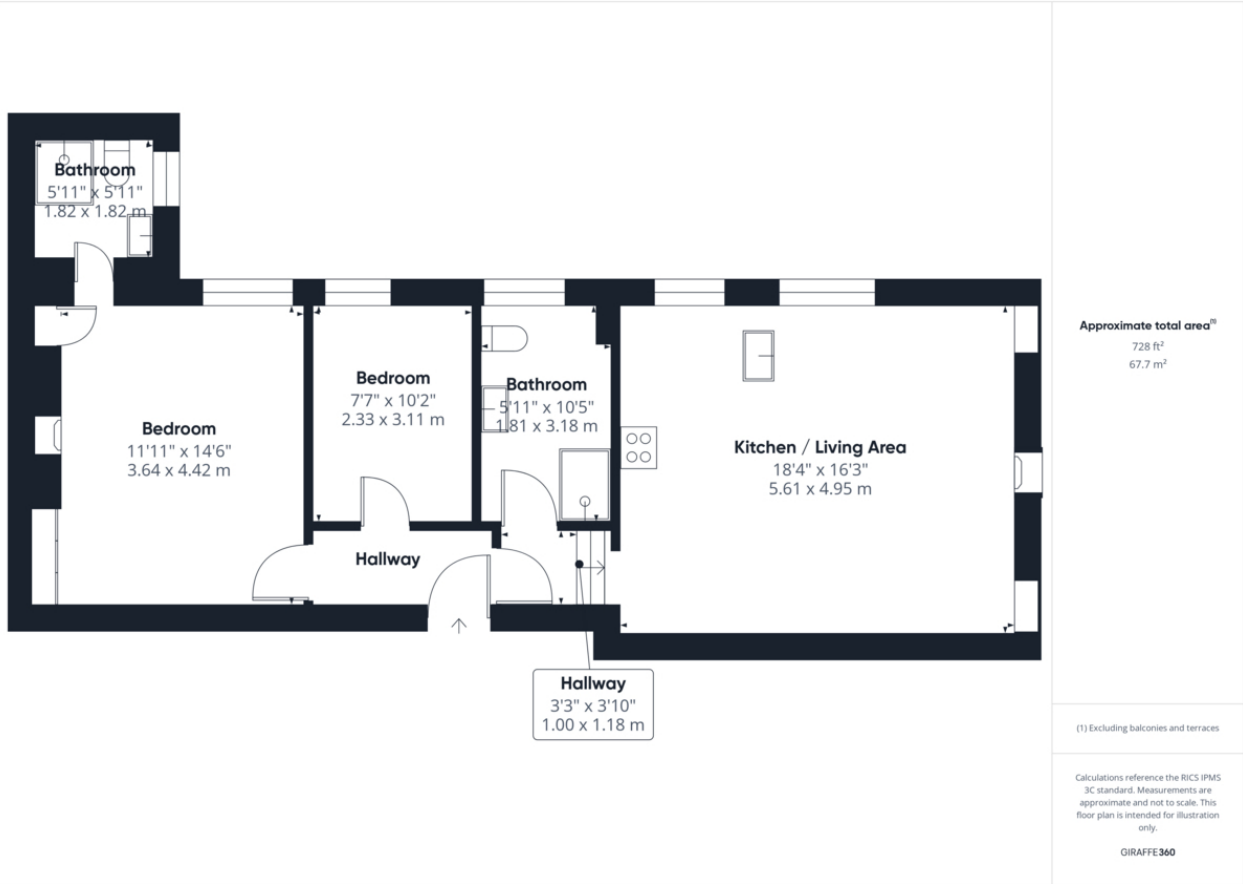
The property is set within immaculate communal grounds, with manicured gardens to enjoy. Holiday letting is not permitted under the lease, helping to retain a peaceful and private atmosphere. Offered with a ••share of the freehold•• and the reassurance of a ••999-year lease•• this is a home of rare quality and style.

A graceful, light-filled apartment in one of Whitby’s architectural gems — this is a property any owner would be proud to call home.









Tenure Type: Share of Freehold
Council Tax Band:
Council Authority: