



Rosedale Close, Whitby, YO21

Guide Price £215,000

Hendersons

www.myhendersons.co.uk | 01947 602626

hendersons.
estate agents



- Attractive three-bedroom home in a popular residential area
- Contemporary bathroom finished to a high standard
- Bright and spacious living accommodation
- Modern kitchen with a practical layout
- Perfect first home, family move or investment opportunity
- Low-maintenance garden with storage

This well-presented three-bedroom mid-terrace home offers modern living in a convenient location, making it an ideal choice for first-time buyers, small families or those looking for a long-term investment property.

Upon entering, you are welcomed into a bright and spacious interior that has been updated with a contemporary finish. The stylish family bathroom is a standout feature, complete with a modern suite, P-shaped bath with shower over, chrome heated towel rail and attractive tiled flooring.

The accommodation includes a comfortable lounge, a fitted kitchen, dining area and three good-sized bedrooms, providing flexibility for family life or working from home.

Externally, the property benefits from a low-maintenance rear courtyard garden, perfect for relaxing or entertaining, with gated access and a useful brick-built storage shed. To the front is a neat lawned garden which enhances the home's kerb appeal.

With its modern touches, well-proportioned layout and practical outside space, this home is ready to move straight into.

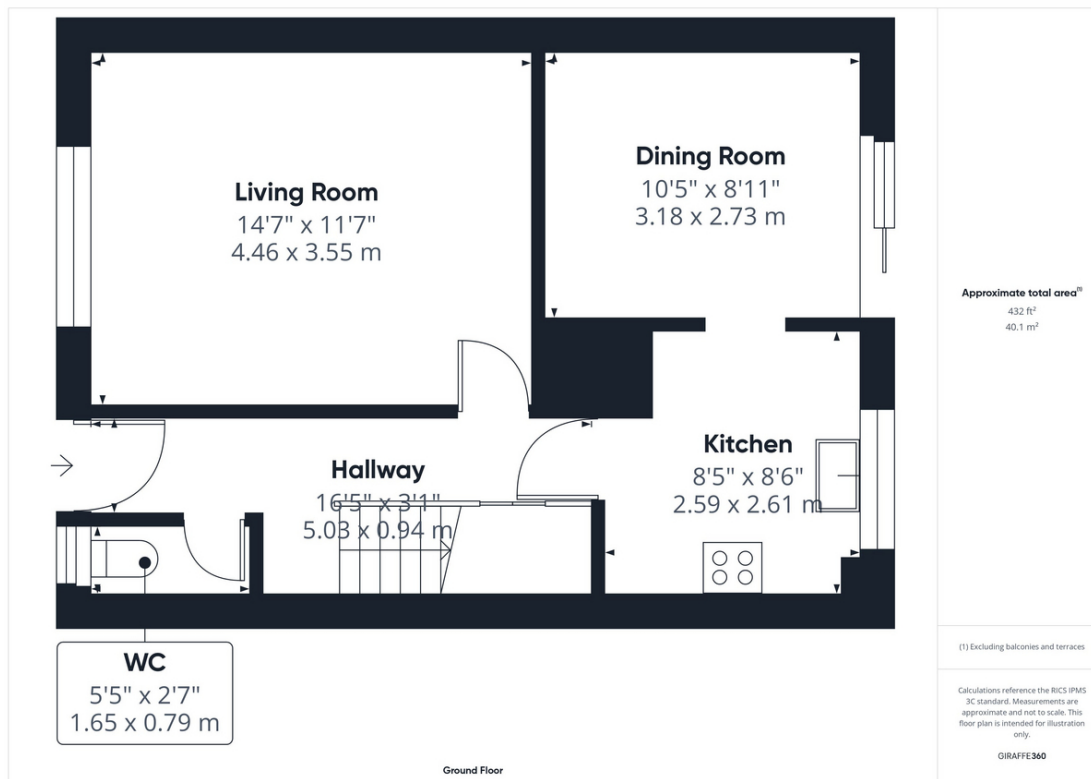




 3

 1





Energy Efficiency Rating		
	Current	Potential
Very energy efficient - lower running costs		
(92+) A		
(81-91) B		87
(69-80) C	74	
(55-68) D		
(39-54) E		
(21-38) F		
(1-20) G		
Not energy efficient - higher running costs		
England, Scotland & Wales		EU Directive 2002/91/EC

Environmental Impact (CO ₂) Rating		
	Current	Potential
Very environmentally friendly - lower CO ₂ emissions		
(92+) A		
(81-91) B		86
(69-80) C	74	
(55-68) D		
(39-54) E		
(21-38) F		
(1-20) G		
Not environmentally friendly - higher CO ₂ emissions		
England, Scotland & Wales		EU Directive 2002/91/EC

