

# The Buckden

 4 Bedroom Detached Home




Plots 30, 32 & 33

This stunning, spacious new-build home comprises four double bedrooms with two ensuites and a house bathroom. The upper floor also features a study, perfect for professionals working from home. On the ground floor is a large open-plan kitchen/dining room with bi-folding doors opening onto the garden, a handy utility room and a downstairs WC. The property also benefits from a large living room and an integral garage.

#### Key features

- Bi-folding doors
- Front and rear turfed garden
- Remote operated garage door
- Designer kitchen
- Energy-saving solar panels
- Integrated appliances
- Open-plan kitchen/dining room
- Spacious separate living room
- Study for working from home
- Four double bedrooms
- Private drive
- Handy utility space & WC
- Useful storage areas
- Two ensuites
- Energy efficient

"a few steps from the coast..."

 01947 602626

 [eskdaleview@myhendersons.co.uk](mailto:eskdaleview@myhendersons.co.uk)

**hendersons.**  
estate agents



# The Buckden

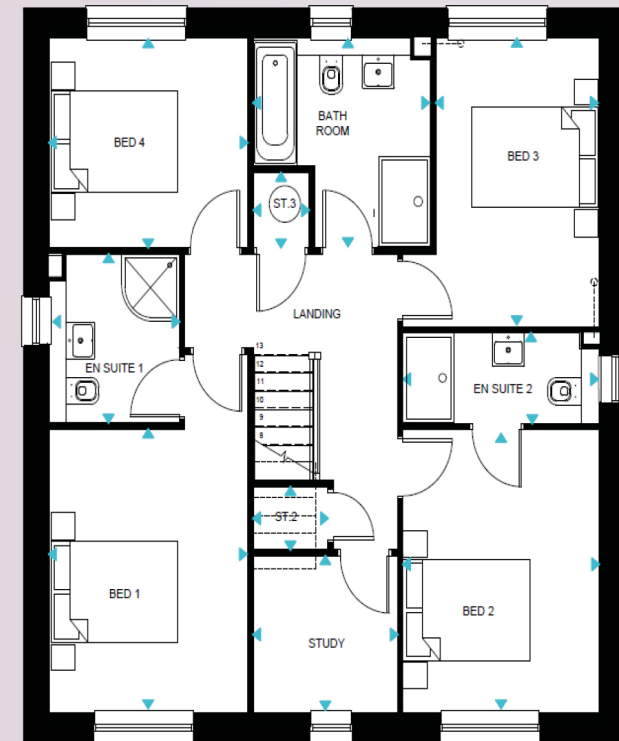


## Ground Floor

	Living	3220 X 5530 mm
	Kitchen/Dining	6490 X 3370 mm
	Utility	1930 X 2190 mm



Information contained within this brochure is for guidance only. Wharfedale Homes Ltd operates a policy of continuous development and features may change. It should be noted that while artist's impressions, models and photography are as accurate as possible they are only representative. These particulars should not be relied upon as accurately describing any of the specific matters prescribed by any order made under consumer and business protection regulations. This information does not constitute a contract, part of a contract or a warranty. All measurements are scaled from plans and some may be varied during construction. Restrictive covenants will apply; please refer to selling agent for further details.



## First Floor

	Bedroom 1	3090 X 3730 mm
	Ensuite 1	2030 X 2250 mm
	Bedroom 2	3050 X 3970 mm
	Bedroom 3	2450 X 3860 mm
	Bedroom 4	3090 X 2800 mm
	Ensuite 2	3040 X 1210 mm
	Bathroom	2760 X 2790 mm
	Study	2250 X 2090 mm