



Moor Meadow Road, Sutton Coldfield,
B75 6



Spacious 4-bed detached with garage on Moor Meadow Road, B75. Features extended L-shaped living room, modern kitchen/diner, stylish bathroom & downstairs W/C. South-facing garden, driveway, and prime location near Good Hope Hospital & Sutton Park.



Key Features

- Approx. 1,380 sq ft + garage – ideal family home
- Four bedrooms, with fitted wardrobes in the principal
- Extended L-shaped living room with garden access
- Bright, modern kitchen/diner plus downstairs W/C
- South-facing garden with patio & lawn
- Driveway parking in sought-after B75, near Good Hope Hospital & Sutton Park









This attractive four-bedroom detached home on Moor Meadow Road offers generous living space of approximately 1,380 sq ft plus garage, making it an ideal family residence. With a bright and modern interior, a south-facing garden, and a prime location close to local amenities, this is a fantastic opportunity in Sutton Coldfield.

Ground Floor

A welcoming porch opens into the hallway with a convenient downstairs W/C. To the left, a formal dining room with bay window provides the perfect space for family meals or entertaining. To the rear, the extended L-shaped living room enjoys views of the garden and offers excellent flexibility for both relaxation and entertaining.

The kitchen is modern, bright, and generously sized, easily accommodating a dining table, and benefits from direct access to the rear patio. Both the living room and kitchen open onto the beautifully maintained south-facing garden, complete with a patio seating area leading onto a lawn — perfect for summer gatherings and al fresco dining.

First Floor

Upstairs, the property boasts four well-proportioned bedrooms, all filled with natural light. The principal bedroom benefits from excellent fitted wardrobes, while the additional rooms are ideal for children, guests, or home office. A stylish family bathroom and a

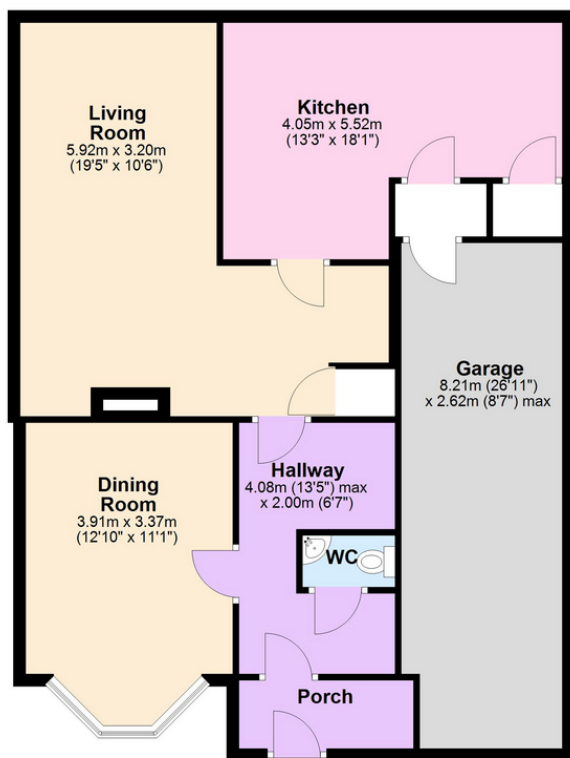




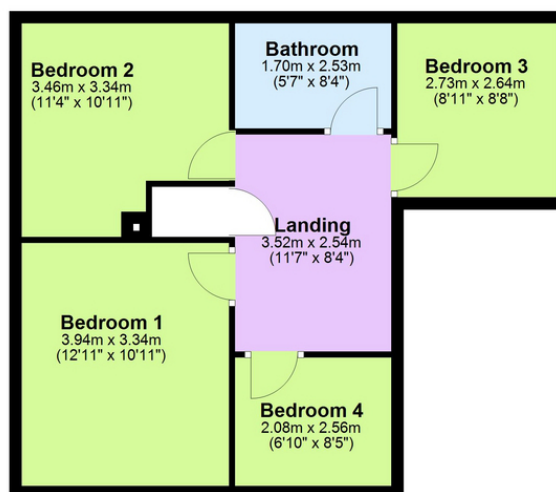




Ground Floor



First Floor



Tenure Type: Freehold
Council Tax Band: E
Council Authority: Birmingham City