



COURTFIELD GARDENS
LONDON, SW5

GRANT J BATES
— PROPERTY —



Elegant double-aspect Courtfield Gardens apartment blending period architecture with contemporary light-filled living.

GJB

Courtfield Gardens, London, SW5

Share of Freehold

- Double-Aspect Corner Position
- Generous Ceiling Heights
- Herringbone Wood Flooring
- Bespoke Fitted Kitchen
- Integrated Appliances
- Porcelain-Tiled Bathrooms
- Walk-In Shower and Bath Suite
- South-Facing Bedrooms
- Private Gated Garden Access
- Lift and Share of Freehold

Description

This newly refurbished two-bedroom, two-bathroom second-floor lateral apartment combines period elegance with contemporary design, creating a refined turnkey home. Set within a handsome corner building, the apartment enjoys a rare double-aspect orientation, flooding the interiors with light and accentuating the generous ceiling heights.

The heart of the home is a beautifully crafted open-plan reception and kitchen, designed for both style and functionality. Herringbone wood flooring runs throughout the living space, complementing bespoke cabinetry and integrated appliances, while a separate utility room ensures practical convenience.

Both bedrooms are south-facing and filled with natural light, with one offering extensive built-in wardrobes. The bathrooms have been finished to a high specification, blending sleek porcelain tiling with modern fittings to create spa-like sanctuaries.

Attention to detail is evident throughout: tall sash windows, subtle cornicing, and a soft, neutral palette balance timeless charm with a clean, contemporary finish.

The property further benefits from a lift and a share of freehold. Residents also have exclusive access to the beautifully maintained Courtfield Gardens Square, a private, gated garden square opposite the entrance—offering a tranquil retreat in the heart of the city.

Situation

Perfectly positioned between Gloucester Road and Earls Court Road, the apartment is surrounded by an exceptional choice of boutiques, wine bars, and restaurants, while Kensington and Chelsea's cultural and architectural heritage lies moments away.

Additional Information

Local Authority: Royal Borough of Kensington & Chelsea.

Council Tax Band: F

EPC Rating: C

Grant J Bates

Director

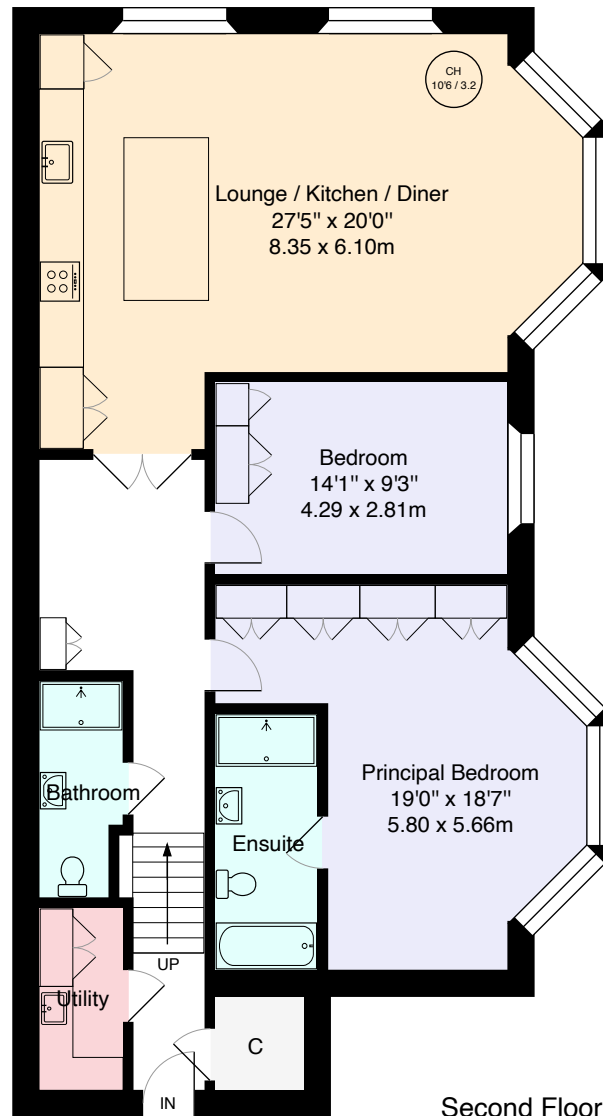
0207 981 2584

grant@grantjbates.com









Second Floor

Courtfield Gardens

Approximate Gross Internal Area = 1186 sq ft / 110.2 sq m

Important Notice: These sales particulars are prepared as a general guide only. We have not carried out a survey or tested appliances/fittings etc. Measurements are estimated and rounded, they are taken between the internal wall surfaces and therefore included cupboards and other joinery. The details should not be relied upon for carpets, floor coverings, fixtures, fittings, furnishings et al. All fixtures, fittings, furnishings, kitchen appliances, whether fitted or not, are deemed removable by the vendor unless otherwise stated or agreed specifically as part of any eventual sale.